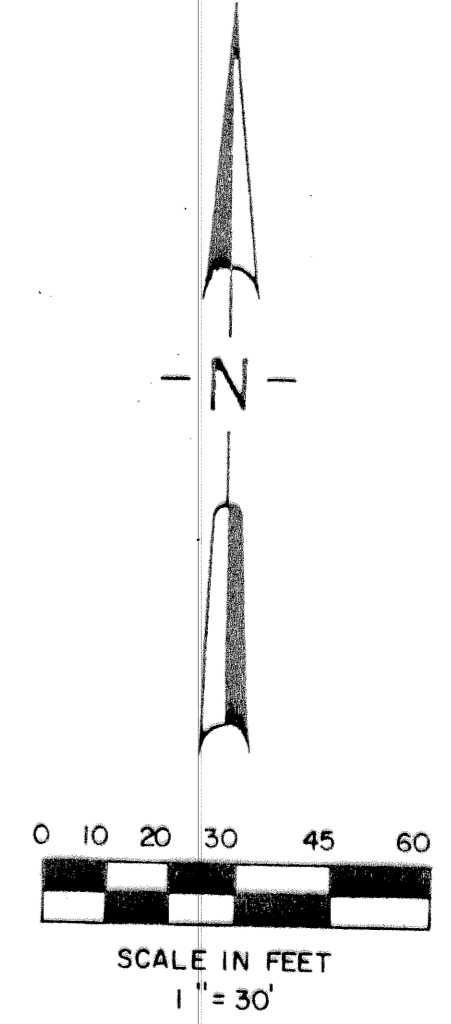
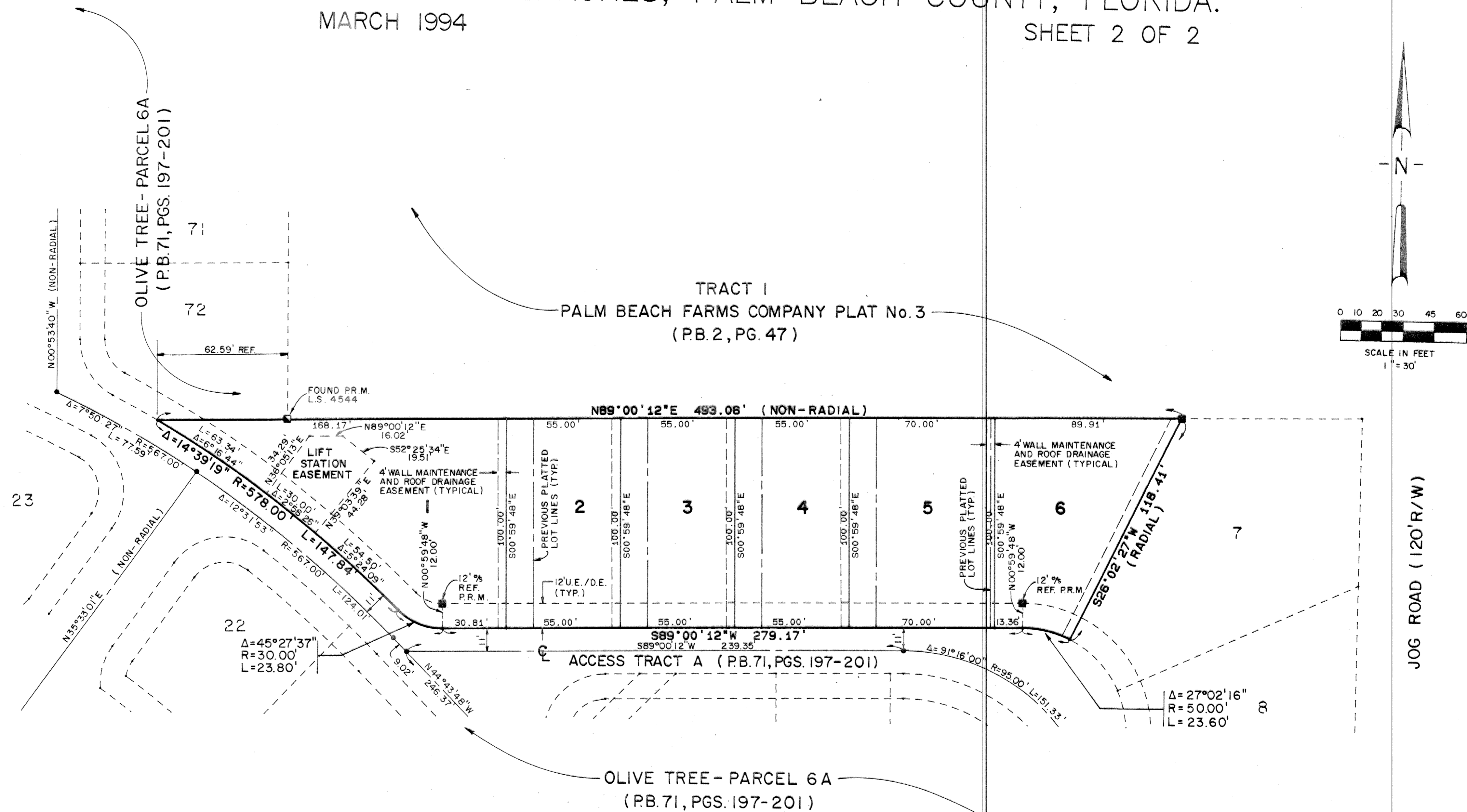


REPLAT OF LOTS 1 THROUGH 6, OLIVE TREE-PARCEL 6A

BEING A REPLAT OF A PORTION OF OLIVE TREE - PARCEL 6A
OF THE RIVER BRIDGE P.U.D., (P.B. 71, PGS. 197 - 201)
LYING IN SECTION 10, TOWNSHIP 44 SOUTH, RANGE 42 EAST
CITY OF GREENACRES, PALM BEACH COUNTY, FLORIDA.

MARCH 1994

SHEET 2 OF 2



LEGEND

- D.E. DRAINAGE EASEMENT
- U.E. UTILITY EASEMENT
- P.B. PLAT BOOK
- O.R.B. OFFICIAL RECORD BOOK
- P.C. POINT OF CURVATURE
- P.T. POINT OF TANGENCY
- P.O.C. POINT OF COMMENCEMENT
- P.O.B. POINT OF BEGINNING
- P.C.P. PERMANENT CONTROL POINT
- P.R.M. PERMANENT REFERENCE MONUMENT
- R/W RIGHT-OF-WAY
- REF. REFERENCE
- SEC. SECTION
- TWP. TOWNSHIP
- RGE. RANGE
- P.L.S. PROFESSIONAL LAND SURVEYOR
- L.B. LICENSED BUSINESS
- TYP. TYPICAL
- N.R. NON-RADIAL

SUBDIVISION # Olive Tree
 BOOK 72 PAGE 97
 FLOOD ZONE FLOOD MAP #
 ROAD # ZONING
 CR ZIP CODE
 PID NAME c/Greenacres
 10/4/94

T2Z 339

PETSCHÉ & ASSOCIATES, INC.
 Professional Engineers - Land Surveyors - Development Consultants - Testing Services
 2581 Metrocentre Boulevard, Suite 6, West Palm Beach, Florida 33407 (407) 640-3800
 6799 Overseas Highway, Suite 7, Marathon, Florida 33050 (305) 743-5786

REPLAT OF LOTS 1 THROUGH 6
 OLIVE TREE - PARCEL 6A
 SECTION 10, TOWNSHIP 44S., RANGE 42E.
 CITY OF GREENACRES, FLORIDA

Drawn by:	Date:	SCALE:	JOB NUMBER:	SHEET	OF
D.W.O.	FEB 1994	1" = 30'	93-051-1	2	2
Designed by:	Checked by:				
	R. HAGLER				